

# Parts List

Ref	Var	IPN	Designation	Ref	Var	IPN	Designation	Ref	Var	IPN	Designation
C1		018-13470-00	Cap 0603 470p 50v X7r±10%	C706		015-26330-08	Cap Cer 0805 330n 5% 10v X7r	R8		038-13100-00	Res 0603 100e 1/16w ± 5%
C2		015-23270-05	Cap 0805 270p 1% 200v Grm40	C707		018-15100-00	Cap 0603 10n 50v X7r ±10%	R9		038-15100-10	Res 0603 10k 1/16w +-1%
C3		018-16100-00	Cap 0603 100n 16v x7r + - 10%	D1		001-10284-51	Diode SMD BZX284B5V1 Zensod110	R10		038-12100-00	Res 0603 10e 1/16W ± 5%
C4		018-13100-00	Cap 0603 100p 50v NPO ±5%	D2		001-10000-99	Diode SMD BAV99 D-Sw SOT23	R11		038-15100-10	Res 0603 10k 1/16w +-1%
C5		018-13100-00	Cap 0603 100p 50v NPO ±5%	D102		001-10000-99	Diode SMD BAV99 D-Sw SOT23	R12		038-14100-00	Res 0603 1k0 1/16w +-5%
C6		018-16100-00	Cap 0603 100n 16v x7r + - 10%	D104		001-10000-99	Diode SMD BAV99 D-Sw SOT23	R13		038-15470-00	Res 0603 47k 1/16w +-5%
C7		015-23270-05	Cap 0805 270p 1% 200v Grm40	D106		001-10000-99	Diode SMD BAV99 D-Sw SOT23	R14		038-15470-00	Res 0603 47k 1/16w +-5%
C8		015-24100-05	Cap Cer 0805 1N 100V 5% COG	D108		001-10000-99	Diode SMD BAV99 D-Sw SOT23	R15		038-14470-00	Res 0603 4k7 1/16w +-5%
C9		015-23270-05	Cap 0805 270p 1% 200v Grm40	D201		001-10036-01	Diode SMD 30BQ060 Sch 3a60 SMC	R16		038-15100-10	Res 0603 10k 1/16w +-1%
C10		015-23270-05	Cap 0805 270p 1% 200v Grm40	D203		001-10054-02	Diode SMD BAT54AW SOT-323	R17		038-15150-10	Res 0603 15K 1% WDS
C11		018-15100-00	Cap 0603 10n 50v X7r ±10%	D602		001-10000-99	Diode SMD BAV99 D-Sw SOT23	R18		038-14470-00	Res 0603 4k7 1/16w +-5%
C12		018-13220-00	Cap 0603 220p 50v NPO±5%	D604		001-10000-99	Diode SMD BAV99 D-Sw SOT23	R19		038-10000-00	Res 0603 Zero Ohm 1/16w ± 5%
C13		018-15270-00	Cap 0603 27n 50v X7r±10%	D605		008-10004-00	LED SMD 0603 Green Ultrabright	R20		038-15100-10	Res 0603 10k 1/16w +-1%
C14		014-08330-00	Cap Tant SMD 330u 10v Loesr E	D606		008-10004-00	LED SMD 0603 Green Ultrabright	R21		036-13100-00	Res M/F SMD 0805 100e 5%
C101		018-15100-00	Cap 0603 10n 50v X7r ±10%	D607		008-10004-00	LED SMD 0603 Green Ultrabright	R22		038-15100-10	Res 0603 10k 1/16w +-1%
C102		018-16100-00	Cap 0603 100n 16v x7r + - 10%	D608		008-10004-00	LED SMD 0603 Green Ultrabright	R23		036-13100-00	Res M/F SMD 0805 100e 5%
C103		018-16100-00	Cap 0603 100n 16v x7r + - 10%	D609		008-10004-00	LED SMD 0603 Green Ultrabright	R24		036-14330-00	Res M/F SMD 0805 3k3 5%
C104		018-14100-00	Cap 0603 1n 50v X7r ±10%	D610		008-10004-00	LED SMD 0603 Green Ultrabright	R25		036-13100-00	Res M/F SMD 0805 100e 5%
C105		018-14100-00	Cap 0603 1n 50v X7r ±10%	D611		008-10004-00	LED SMD 0603 Green Ultrabright	R26		036-13820-00	Res M/F SMD 0805 820e 5%
C108		018-15100-00	Cap 0603 10n 50v X7r ±10%	D612		008-10004-00	LED SMD 0603 Green Ultrabright	R30		038-11470-00	Res 0603 4e7 1/16W ± 5%
C109		018-13470-00	Cap 0603 470p 50v X7r±10%	D613		008-10004-00	LED SMD 0603 Green Ultrabright	R31		038-15100-10	Res 0603 10k 1/16w +-1%
C110		018-14100-00	Cap 0603 1n 50v X7r ±10%	D614		008-10004-00	LED SMD 0603 Green Ultrabright	R32		038-15100-10	Res 0603 10k 1/16w +-1%
C201		015-27100-10	Cap Cer 0805 1m+80-20% Y5v 16v	D615		008-10002-00	LED SMD 0603 Red U/B C190KRKT	R33		038-12560-00	Res 0603 56e 1/16w ± 5%
C202		015-07470-10	Cap Cer 1206 4u7 X7r 16v	D616		008-10005-00	LED SMD 0603 Green Ultrabright	R34		038-10000-00	Res 0603 Zero Ohm 1/16w ± 5%
C204		018-16100-00	Cap 0603 100n 16v x7r + - 10%	D617		008-10001-00	LED SMD 0603 Ornge Ultrabright	R35		038-10000-00	Res 0603 Zero Ohm 1/16w ± 5%
C205		015-06470-01	Cap Cer 1206 470n X7r 20% 50v	D618		008-10004-00	LED SMD 0603 Green Ultrabright	R36		038-10000-00	Res 0603 Zero Ohm 1/16w ± 5%
C206		015-10047-00	Cap Cer SMD 4U7 50v X7r Grm55	D620		001-10000-99	Diode SMD BAV99 D-Sw SOT23	R37		038-15100-10	Res 0603 10k 1/16w +-1%
C207		015-26100-08	Cap Cer 0805 100n 10% X7r 50v	D702		001-10000-99	Diode SMD BAV99 D-Sw SOT23	R38		038-15100-10	Res 0603 10k 1/16w +-1%
C210		018-16100-00	Cap 0603 100n 16v x7r + - 10%	D704		001-10000-99	Diode SMD BAV99 D-Sw SOT23	R39		038-15100-10	Res 0603 10k 1/16w +-1%
C302		018-13120-10	Cap 0603 120p 50v NPO±1%	D706		001-10000-99	Diode SMD BAV99 D-Sw SOT23	R40		038-15100-10	Res 0603 10k 1/16w +-1%
C303		018-15100-00	Cap 0603 10n 50v X7r ±10%	D708		001-10000-99	Diode SMD BAV99 D-Sw SOT23	R102		038-10000-00	Res 0603 Zero Ohm 1/16w ± 5%
C304		018-12180-10	Cap 0603 18p 50v NPO ±1%	E100		319-01258-00	Shld Can Dgtl TMA	R103		038-15100-10	Res 0603 10k 1/16w +-1%
C305		018-13120-10	Cap 0603 120p 50v NPO±1%	E103		057-11220-02	Ind 0603 Blm11a221 Emi Supr	R104		038-15100-10	Res 0603 10k 1/16w +-1%
C307		018-13120-10	Cap 0603 120p 50v NPO±1%	E105		057-10020-02	Ind 0603 BIM18pg300 Emi Supr	R105		038-10000-00	Res 0603 Zero Ohm 1/16w ± 5%
C401		018-15100-00	Cap 0603 10n 50v X7r ±10%	E106		057-10020-02	Ind 0603 BIM18pg300 Emi Supr	R106		038-15100-10	Res 0603 10k 1/16w +-1%
C402		018-16100-00	Cap 0603 100n 16v x7r + - 10%	E107		057-10020-02	Ind 0603 BIM18pg300 Emi Supr	R107		038-15100-10	Res 0603 10k 1/16w +-1%
C403		018-14100-00	Cap 0603 1n 50v X7r ±10%	E108		057-10020-02	Ind 0603 BIM18pg300 Emi Supr	R108		038-14100-00	Res 0603 1k0 1/16w +-5%
C404		018-16100-00	Cap 0603 100n 16v x7r + - 10%	E202		057-10020-02	Ind 0603 BIM18pg300 Emi Supr	R109		038-15100-10	Res 0603 10k 1/16w +-1%
C405		018-14100-00	Cap 0603 1n 50v X7r ±10%	E203		057-10020-02	Ind 0603 BIM18pg300 Emi Supr	R110		038-15100-10	Res 0603 10k 1/16w +-1%
C406		018-15100-00	Cap 0603 10n 50v X7r ±10%	E401		057-10020-02	Ind 0603 BIM18pg300 Emi Supr	R111		038-13100-00	Res 0603 100e 1/16w ± 5%
C407		018-15100-00	Cap 0603 10n 50v X7r ±10%	E402		057-10020-02	Ind 0603 BIM18pg300 Emi Supr	R112		038-13100-00	Res 0603 100e 1/16w ± 5%
C408		018-15100-00	Cap 0603 10n 50v X7r ±10%	F101		239-10001-00	Sw P-Estr SMD 100-2 1a 30v	R113		038-13100-00	Res 0603 100e 1/16w ± 5%
C409		018-15100-00	Cap 0603 10n 50v X7r ±10%	J101		240-10007-00	Conn SMD 10W 2R SKT M/Match	R114		038-13100-00	Res 0603 100e 1/16w ± 5%
C410		018-15100-00	Cap 0603 10n 50v X7r ±10%	J102		240-10000-15	Conn SMD 14w Zif 1mm Ffc/Fpc	R115		038-13100-00	Res 0603 100e 1/16w ± 5%
C411		018-15100-00	Cap 0603 10n 50v X7r ±10%	J103		240-10000-11	Conn SMD 18w Skt M/Match	R116		038-13100-00	Res 0603 100e 1/16w ± 5%
C412		018-15100-00	Cap 0603 10n 50v X7r ±10%	J104		240-04021-95	Skt 2 Way SMD Hort	R117		038-13100-00	Res 0603 100e 1/16w ± 5%
C413		018-15100-00	Cap 0603 10n 50v X7r ±10%	J105		240-10000-24	Conn SMD 21w 1mm Pcb Str	R118		038-13100-00	Res 0603 100e 1/16w ± 5%
C414		018-15100-00	Cap 0603 10n 50v X7r ±10%	J106		240-04048-00	Skt 8way Vert Rj45	R119		036-02680-02	Res 1206 68e 5% 0.25w 200v
C415		018-15100-00	Cap 0603 10n 50v X7r ±10%	J107		240-10000-24	Conn SMD 21w 1mm Pcb Str	R201		038-15100-10	Res 0603 10k 1/16w +-1%
C416		018-15100-00	Cap 0603 10n 50v X7r ±10%	L1		056-10010-05	Ind SMD 2220 10uh 10% Simid05	R202		038-15330-10	Res 0603 33k 1%
C417		015-27100-10	Cap Cer 0805 1m+80-20% Y5v 16v	L201		057-10015-16	IND SMD PWR CDRH6D38 15uH 1.6A	R203		038-15100-10	Res 0603 10k 1/16w +-1%
C419		018-15100-00	Cap 0603 10n 50v X7r ±10%	PCB		220-01718-01	PCB MFX Control Head	R205		038-14562-10	Res 0603 5k62 16w +-1%
C420		018-15100-00	Cap 0603 10n 50v X7r ±10%	Q1		000-10008-57	Xstr SMD BC857 PNP SOT23 5S	R206		038-14330-10	Res 0603 3k3 1% 1/16w
C421		018-15100-00	Cap 0603 10n 50v X7r ±10%	Q2		000-10000-20	Xstr Dual PNP Res Eq SOT363	R208		038-15330-10	Res 0603 33k 1%
C422		018-15100-00	Cap 0603 10n 50v X7r ±10%	Q3		000-10000-90	Xstr PUMD9 Dual NPN/PNP SOT363	R210		038-15100-10	Res 0603 10k 1/16w +-1%
C423		018-15100-00	Cap 0603 10n 50v X7r ±10%	Q102		000-10073-04	Xstr IRF7304 Dual P Mfet S08	R303		038-12330-00	Res 0603 33e 1/16w ± 5%
C424		018-15100-00	Cap 0603 10n 50v X7r ±10%	Q201		000-10008-47	Xstr SMD BC847B NPN SOT23	R304		038-15100-10	Res 0603 10k 1/16w +-1%
C425		015-27100-10	Cap Cer 0805 1m+80-20% Y5v 16v	Q301		000-10008-92	Xstr SMD BFS17 NPN SOT23	R305		038-15100-10	Res 0603 10k 1/16w +-1%
C426		018-15100-00	Cap 0603 10n 50v X7r ±10%	Q603		000-10084-71	Xstr BC847BW NPN SOT323	R306		038-14100-00	Res 0603 1k0 1/16w +-5%
C427		018-15100-00	Cap 0603 10n 50v X7r ±10%	Q604		000-10084-71	Xstr BC847BW NPN SOT323	R307		038-13820-00	Res 0603 820e 1/16w +-5%
C428		018-15100-00	Cap 0603 10n 50v X7r ±10%	Q605		000-10084-71	Xstr BC847BW NPN SOT323	R308		038-17100-00	Res 0603 1m 1/16w +-5%
C429		018-15100-00	Cap 0603 10n 50v X7r ±10%	Q606		000-10084-71	Xstr BC847BW NPN SOT323	R401		038-15100-10	Res 0603 10k 1/16w +-1%
C430		018-15100-00	Cap 0603 10n 50v X7r ±10%	Q607		000-10084-71	Xstr BC847BW NPN SOT323	R402		038-15100-10	Res 0603 10k 1/16w +-1%
C501		018-16100-00	Cap 0603 100n 16v x7r + - 10%	Q608		000-10084-71	Xstr BC847BW NPN SOT323	R408		038-15100-10	Res 0603 10k 1/16w +-1%
C502		015-27100-10	Cap Cer 0805 1m+80-20% Y5v 16v	Q609		000-10084-71	Xstr BC847BW NPN SOT323	R501		038-15100-10	Res 0603 10k 1/16w +-1%
C503		018-16100-00	Cap 0603 100n 16v x7r + - 10%	Q610		000-10084-71	Xstr BC847BW NPN SOT323	R601		038-14220-00	Res 0603 2k2 1/16w +-5%
C504		018-16100-00	Cap 0603 100n 16v x7r + - 10%	Q611		000-10084-71	Xstr BC847BW NPN SOT323	R602		038-14562-10	Res 0603 5k62 16w +-1%
C505		018-16100-00	Cap 0603 100n 16v x7r + - 10%	Q702		000-10084-62	Xstr BC8465 Dual SOT363 NPN	R603		038-14100-00	Res 0603 1k0 1/16w +-5%
C506		018-16100-00	Cap 0603 100n 16v x7r + - 10%	Q703		000-10085-71	Xstr SMD BC857BW PNP SOT323	R604		038-12390-00	Res 0603 39e 1/16w ± 5%
C601		018-16100-00	Cap 0603 100n 16v x7r + - 10%	Q704		000-10008-47	Xstr SMD BC847B NPN SOT23	R605		038-12390-00	Res 0603 39e 1/16w ± 5%
C602		018-16100-00	Cap 0603 100n 16v x7r + - 10%	R1		038-15100-10	Res 0603 10k 1/16w +-1%	R606		038-15100-10	Res 0603 10k 1/16w +-1%
C603		018-16100-00	Cap 0603 100n 16v x7r + - 10%	R2		038-13100-00	Res 0603 100e 1/16w ± 5%	R607		038-14330-10	Res 0603 3k3 1% 1/16w
C701		015-27100-10	Cap Cer 0805 1m+80-20% Y5v 16v	R3		038-15100-10	Res 0603 10k 1/16w +-1%	R609		038-13120-00	Res 0603 120e 1/16w ± 5%
C702		018-16100-00	Cap 0603 100n 16v x7r + - 10%	R4		038-13100-00	Res 0603 100e 1/16w ± 5%	R610		038-12100-00	Res 0603 10e 1/16W ± 5%
C703		015-26330-08	Cap Cer 0805 330n 5% 10v X7r	R5		038-13100-00	Res 0603 100e 1/16w ± 5%	R611		038-14220-00	Res 0603 2k2 1/16w +-5%
C704		018-15100-00	Cap 0603 10n 50v X7r ±10%	R6		038-13100-00	Res 0603 100e 1/16w ± 5%	R612		038-12390-00	Res 0603 39e 1/16w ± 5%
C705		015-26330-08	Cap Cer								

# Parts List

# Grid Reference Index

# PCB IPN 220-01718-01

Ref	Var	IPN	Designation
R614		038-11470-00	Res 0603 4e7 1/16W ± 5%
R615		038-12560-00	Res 0603 56e 1/16w ± 5%
R616		038-12820-00	Res 0603 82e 1/16w ± 5%
R617		038-11470-00	Res 0603 4e7 1/16W ± 5%
R618		038-12560-00	Res 0603 56e 1/16w ± 5%
R619		038-12560-00	Res 0603 56e 1/16w ± 5%
R620		038-16100-00	Res 0603 100k 1/16w +5%
R621		038-16100-00	Res 0603 100k 1/16w +5%
R622		038-16100-00	Res 0603 100k 1/16w +5%
R623		038-14470-00	Res 0603 4k7 1/16w +5%
R624		038-14470-00	Res 0603 4k7 1/16w +5%
R625		038-14470-00	Res 0603 4k7 1/16w +5%
R626		038-15150-10	Res 0603 15K 1% WDS
R627		038-14220-00	Res 0603 2k2 1/16w +5%
R628		038-15100-10	Res 0603 10k 1/16w +-1%
R701		038-13470-00	Res 0603 470e 1/16w +5%
R702		038-15470-00	Res 0603 47k 1/16w +5%
R703		038-15470-00	Res 0603 47k 1/16w +5%
R704		038-15470-00	Res 0603 47k 1/16w +5%
R705		038-14680-10	Res 0603 6k8 1/16w 1%
R706		038-15100-10	Res 0603 10k 1/16w +-1%
R707		038-15330-10	Res 0603 33k 1%
R708		038-15470-00	Res 0603 47k 1/16w +5%
R709		038-14220-00	Res 0603 2k2 1/16w +5%
R710		038-14470-00	Res 0603 4k7 1/16w +5%
R711		038-13100-00	Res 0603 100e 1/16w ± 5%
RV101		040-05601-00	Pot 10k Vert 30mm Shaft 9mm
S201		232-00010-38	Sw Tact Spst SMD Skqdab Pc
U1		002-15973-00	IC L5973A 2A ADJ SW REG SO8
U202		002-10370-50	IC TPS3705 3V3 L-Volt Sense
U203		002-10725-15	IC SMD TPS72515 1V5 LDO 1A Reg
U302		002-74910-41	IC SMD 74V1G04 Inverter SC70
U405		002-20006-00	IC FPGA EP1C6 Cyclone BGA256
U406		002-12540-00	IC M25P40 Serial Flash 3V MLP8
U501		002-14016-00	IC SRAM 256X16 70NS 3V BGA48
U502		002-12880-07	IC M28W800 BOT Flash 70NS BGA
U601		002-10832-01	IC TLV0832 2CH 8BIT 3V ADC SO8
U704		002-13740-53	IC 74LV4053 Mux/Demux Tssop16
X301		274-10023-00	Xtal 12.288MHz Hc-49/Sm+-30ppm

Ref	PCB	Circuit
C1	1:P1	6C2
C2	1:C5	6C2
C3	1:M4	6E3
C4	1:D6	1F4
C5	1:B6	1C8
C6	2:C3	1D11
C7	1:B4	1A11
C8	1:C5	1D10
C9	1:B5	1B13
C10	1:B6	1B13
C11	1:D2	2F3
C12	1:D6	2F4
C13	1:D5	2F4
C14	1:F5	2G6
C101	1:E3	1F11
C102	1:E4	1F12
C103	1:F3	1F12
C104	1:C4	1F3
C105	1:D3	1F3
C108	2:C3	1B11
C109	1:B4	1C8
C110	1:C3	1F5
C201	1:G6	2F7
C202	1:G6	2F8
C204	1:J5	2C8
C205	1:C1	2G2
C206	1:D5	2G4
C207	1:D5	2G2
C210	1:F5	2G8
C301	1:J5	2B2
C302	1:J5	2B3
C303	1:H4	2A7
C304	1:J5	2B3
C305	1:H4	2B4
C306	1:G4	2B4
C307	1:H4	2C5
C401	1:J2	3C14
C402	1:H3	3K3
C403	1:H3	3K3
C404	1:H1	3E4
C405	1:H1	3E5
C406	1:G5	3C4
C407	1:G2	3C12
C408	1:J2	3C12
C409	1:J2	3C12
C410	1:H1	3C12
C411	1:J2	3C13
C412	1:J2	3C13
C413	1:J3	3C13
C414	1:G3	3C13
C415	1:H3	3C14
C416	1:G2	3C14
C417	1:G2	3C11
C419	1:G1	3K5
C420	1:G1	3K5
C421	1:G1	3K5
C422	1:G3	3K10
C423	1:G3	3K10
C424	1:G2	3K10
C425	1:J3	3E8
C426	1:J3	3E8
C427	1:G3	3E8
C428	1:J1	3E6
C429	1:J2	3E6
C430	1:J3	3E7
C501	1:J5	4C6
C502	1:J2	4A5
C503	1:K2	4A6
C504	1:K1	4A6
C505	1:K2	4A7
C506	1:J2	4A7
C601	1:K4	5B6
C602	1:K4	5B7
C603	1:K5	5C8
C701	1:M3	6D6
C702	1:M4	6D7
C703	1:M3	6C3

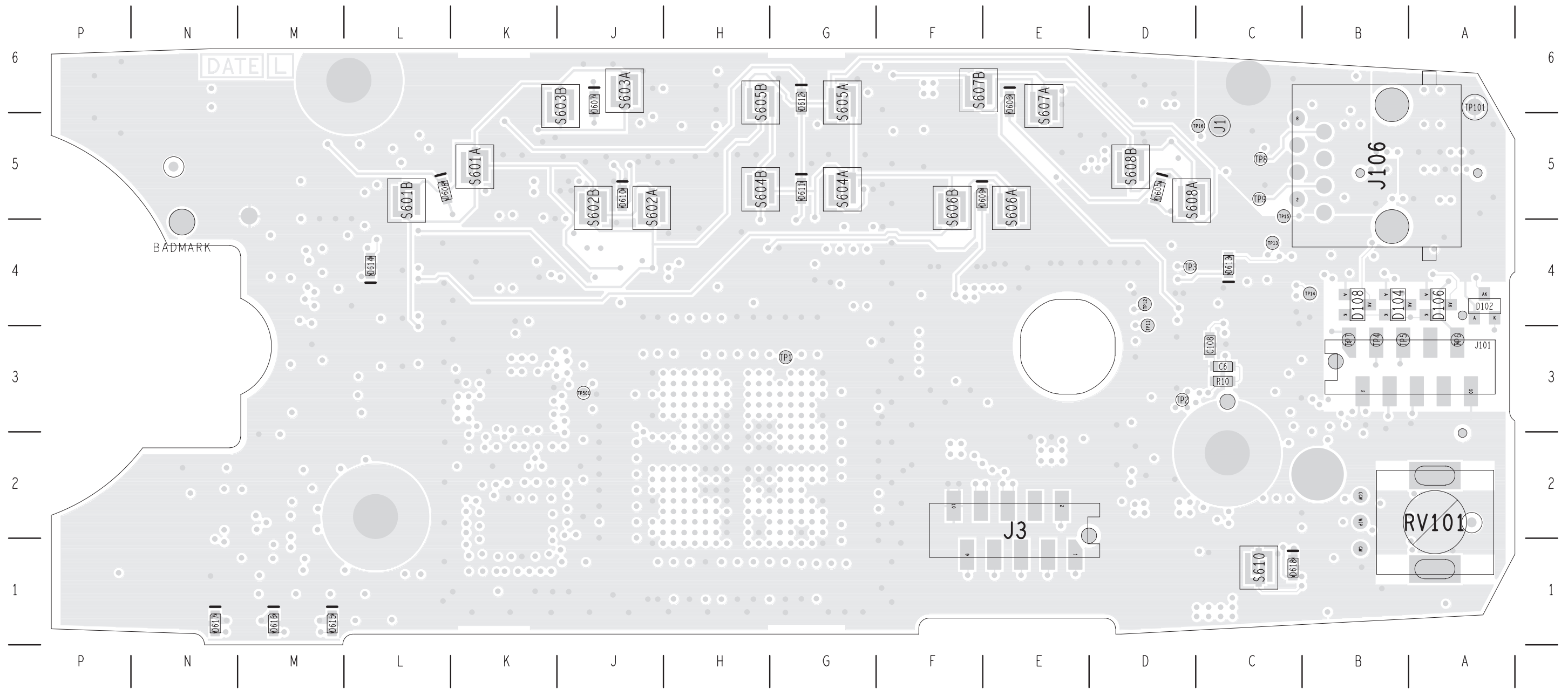
Ref	PCB	Circuit
C704	1:M2	6C3
C705	1:M3	6C4
C706	1:N2	6C2
C707	1:N2	6A5
CM1	1:P1	1B13
CM2	1:P1	1B13
D1	1:D2	2G3
D2	1:B2	3F12
D102	2:A4	1C11 1B11
D104	2:B4	1B11 1C11
D106	2:A4	1C12 1B12
D108	2:B4	1B12 1C12
D201	1:E5	2G5
D203	1:H6	2D8
D301	1:J5	2B3
D602	1:L3	5J5
D604	1:L4	5J4
D605	2:D5	5F11
D606	2:E6	5F11
D607	2:J6	5F10
D608	2:L5	5F10
D609	2:F5	5F11
D610	2:J5	5F10
D611	2:G5	5F11
D612	2:G6	5F11
D613	2:C4	5D5
D614	2:L4	5D6
D615	2:M1	5D7
D616	2:M1	5D8
D617	2:N1	5D9
D618	2:C1	5F11
D620	1:L4	5J4
D702	1:M3	6D2 6C2
D704	1:N2	6C2
D706	1:M4	6E6
D708	1:M2	6C5
E100	1:H3	1J13
E101	1:E5	1J13
E103	1:B4	1D13
E105	1:N6	1F2
E106	1:N6	1F2
E107	1:D3	1H2
E108	1:E4	1F12
E202	1:F6	2G8
E203	1:G5	2F9
E401	1:H3	3K4
E402	1:H1	3E5
F101	1:C1	1H2
J1	2:C5	1K12
J3	2:E2	1A2
J101	2:A3	1C2
J102	1:E2	1G13
J103	1:C4	1G2
J104	1:P6	1F2
J105	1:A5	1D2
J106	2:B5	1C13
J107	1:A3	1J2
L1	1:D1	2G2
L201	1:F5	2G5
NS1	1:C5	1K13
NS2	1:M4	6E2
Q1	1:K4	3K12
Q2	1:L5	5F9 5F7
Q3	1:A1	3E13 3E12
Q102	1:F3	1G12 1H11
Q201	1:D3	2F3
Q301	1:H4	2B4
Q603	1:M5	5E10
Q604	1:L1	5D5
Q605	1:L1	5D6
Q606	1:M1	5D7
Q607	1:M1	5D8
Q608	1:N1	5D9
Q609	1:L5	5E11
Q610	1:B2	5E11
Q611	1:B1	5K10
Q702	1:M4	6D7 6D6

Ref	PCB	Circuit
Q703	1:M4	6E6
Q704	1:M2	6C4
R1	1:J4	4C8
R2	1:D4	1G4
R3	1:D6	1H4
R4	1:G2	1G8
R5	1:G3	1G8
R6	1:H1	1G8
R7	1:H1	1G8
R8	1:G2	1G8
R9	1:B3	1E5
R10	2:C3	1D12
R11	1:K5	5C9
R12	1:G3	3G7
R13	1:K4	3J12
R14	1:J3	3K13
R15	1:K3	3K13
R16	1:D2	2G3
R17	1:D2	2F3
R18	1:D5	2F4
R19	1:J1	4E6
R20	1:G3	1D5
R21	1:B6	1C11
R22	1:B6	1B11
R23	1:A4	1A11
R24	1:B6	1C11
R25	1:C5	1C12
R26	1:B4	1C12
R27	1:B4	5E5
R28	1:L5	5E6
R29	1:M1	5E8
R30	1:M5	5F10
R31	1:A2	3F12
R32	1:B2	3F13
R33	1:A2	3E13
R34	1:B4	5E5
R35	1:L5	5E6
R36	1:M1	5E8
R37	1:H3	3J2
R38	1:G1	3E3
R39	1:G1	3C3
R40	1:G1	3C4
R102	1:D4	1F3
R103	1:C3	1F5
R104	1:D4	1F5
R105	1:B1	1E13
R106	1:A6	1E5
R107	1:A6	1E5
R108	1:B6	1C4
R109	1:C4	1H4
R110	1:B4	1F5
R111	1:C3	1H5
R112	1:D3	1H5
R113	1:C4	1G4
R114	1:C4	1G3
R115	1:D3	1G4
R116	1:C4	1G3
R117	1:C5	1G3
R118	1:D5	1G4
R119	1:B4	1D13
R201	1:J6	2C6
R202	1:H6	2E7
R203	1:H5	2D9
R204	1:H6	2D6
R205	1:E6	2G6
R206	1:D6	2F6
R208	1:E5	2G3
R210	1:G6	2F6
R301	1:J4	2B2
R302	1:J5	2B3
R303	1:H4	2C6
R304	1:G4	2C4
R305	1:G4	2B4
R306	1:H4	2C5
R307	1:G4	2B5
R308	1:H4	2C6
R401	1:H3	3K2

Ref	PCB	Circuit
R402	1:H3	3K3
R408	1:H1	3A5
R501	1:J3	4D7
R601	1:L1	5D4
R602	1:L1	5D4
R603	1:N1	5D4
R604	1:L1	5D5
R605	1:L1	5D6
R606	1:B1	5K6
R607	1:L5	5F8
R608	1:K4	5C6
R609	1:M1	5D7
R610	1:B1	5J8
R611	1:L5	5F9
R612	1:M1	5D8
R613	1:M5	5E9
R614	1:D4	5F11
R615	1:M5	5E10
R616	1:N1	5D9
R617	1:F4	5F11
R618	1:L5	5E11
R619	1:B2	5E11
R620	1:L3	5J6
R621	1:L4	5J7
R622	1:L4	5J8
R623	1:J4	5H5
R624	1:G5	5H5
R625	1:D5	5G5
R626	1:B1	5K9
R627	1:B1	5K9
R628	1:B1	5K10
R701	1:M3	6D2
R702	1:M4	6E7
R703	1:M4	6E7
R704	1:M4	6D7
R705	1:M3	6C3
R706	1:L3	6C4
R707	1:L3	6C3
R708	1:L2	6C3
R709	1:N1	6C1
R710	1:N2	6C2
R711	1:M2	6C5
RV101	2:B2	1D13
S201	1:J6	2C7
S601A	2:K5	5J5
S601B	2:L5	5J6
S602A	2:J5	5J6
S602B	2:J5	5J6
S603A	2:J6	5J7
S603B	2:J6	5J7
S604A	2:G5	5H5
S604B	2:H5	5H6
S605A	2:G6	5H6
S605B	2:H6	5H6
S606A	2:E5	5H7
S606B	2:F5	5H7
S607A	2:E6	5G5
S607B	2:F6	5G6
S608A	2:D5	5G6
S608B	2:D5	5G6
S610	2:C1	5J8
TP1	2:G3	3G7
TP2	2:D3	1H3
TP3	2:D4	1H3
TP4	2:B3	1F3
TP5	2:B3	1F3
TP6	2:A3	1F4
TP7	2:B3	1F4
TP8	2:C5	1C12
TP9	2:C5	1D13
TP11	2:D3	1H5
TP12	2:D4	1H5
TP13	2:C4	1H5
TP14	2:B4	1H5
TP15	2:C5	1H5
TP16	2:C5	1H6
TP101	2:A6	1J12

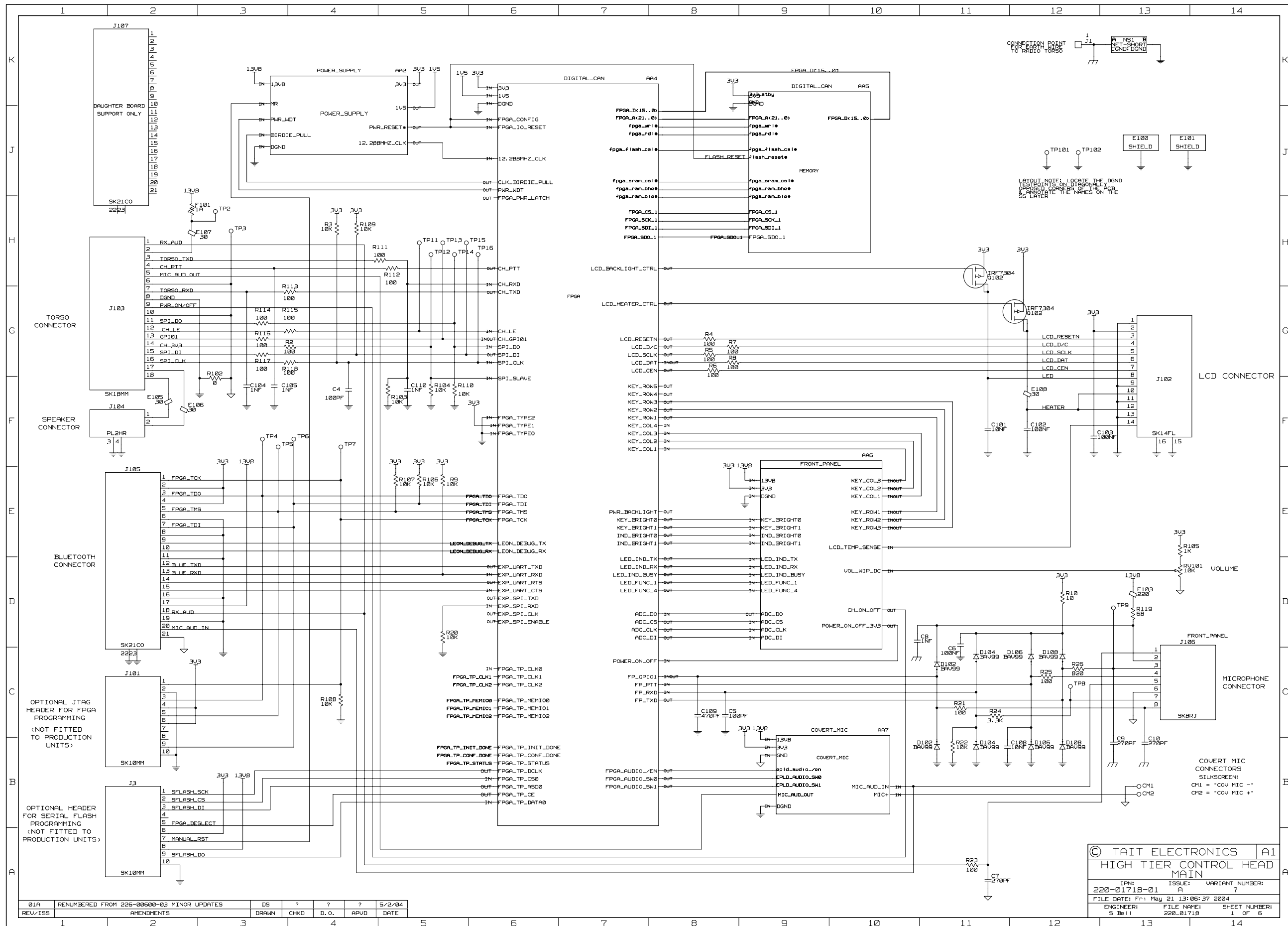
Ref	PCB	Circuit
TP102	1:M5	1J12
TP501	2:J3	4C7
U1	1:E5	2G5
U202	1:J6	2D7
U203	1:H6	2F8
U302	1:H4	2C6 2A7
U405	1:H2	3D13 3C9
		3H4 3C5 3H9
U406	1:G4	3B3
U501	1:K2	4E5
U502	1:K3	4E7
U503	1:J4	4C5
U601	1:K4	5B8
U704	1:M2	6B7 6C4 6A5
		6C3



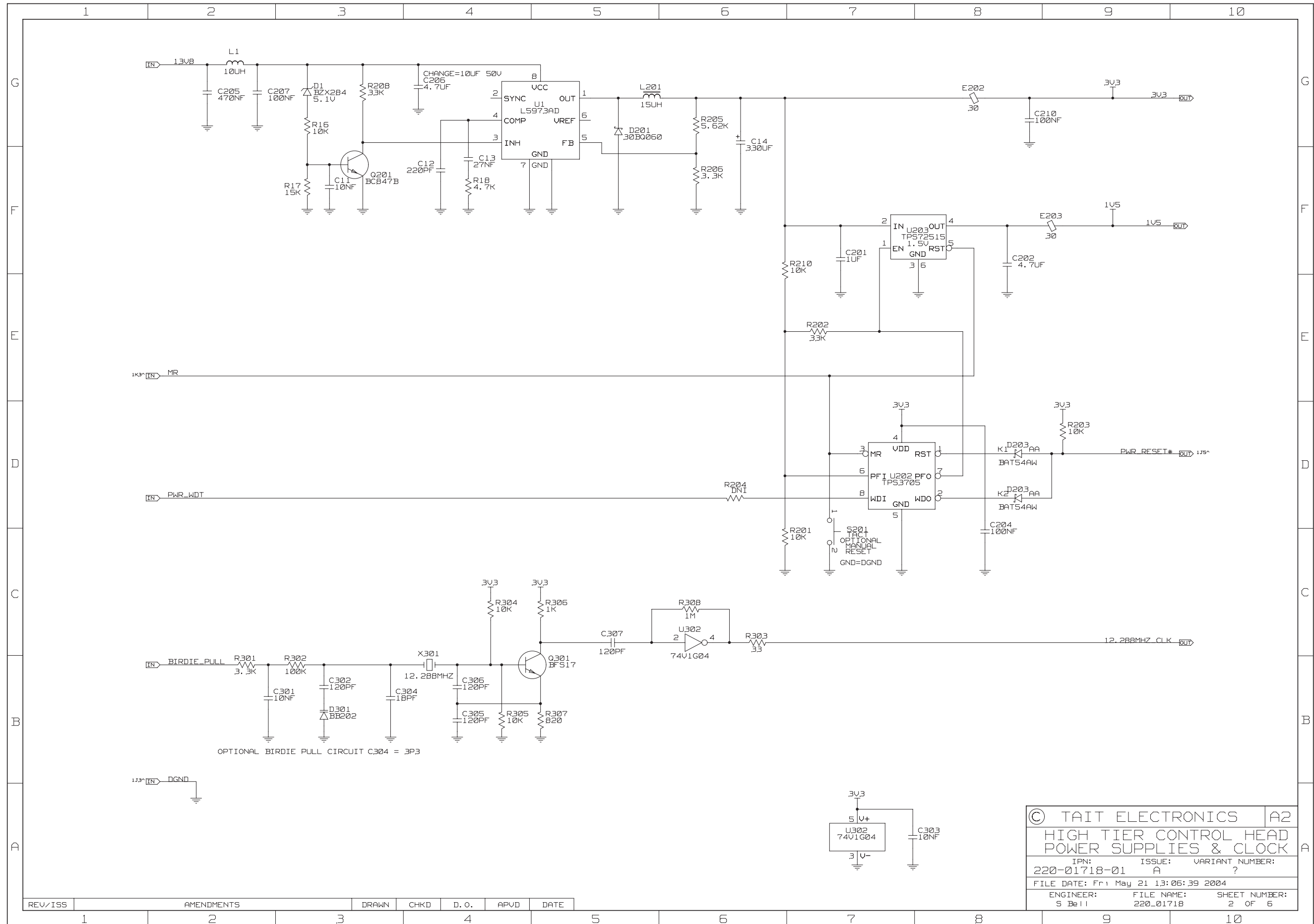


TAIT ELECTRONICS	IPN: 220-01718-01	ISS: A	DATE: 6Dec04	SCALE: NTS
MFX2 HT FRONT PANEL LAYOUT-SECONDARY-SIDE				



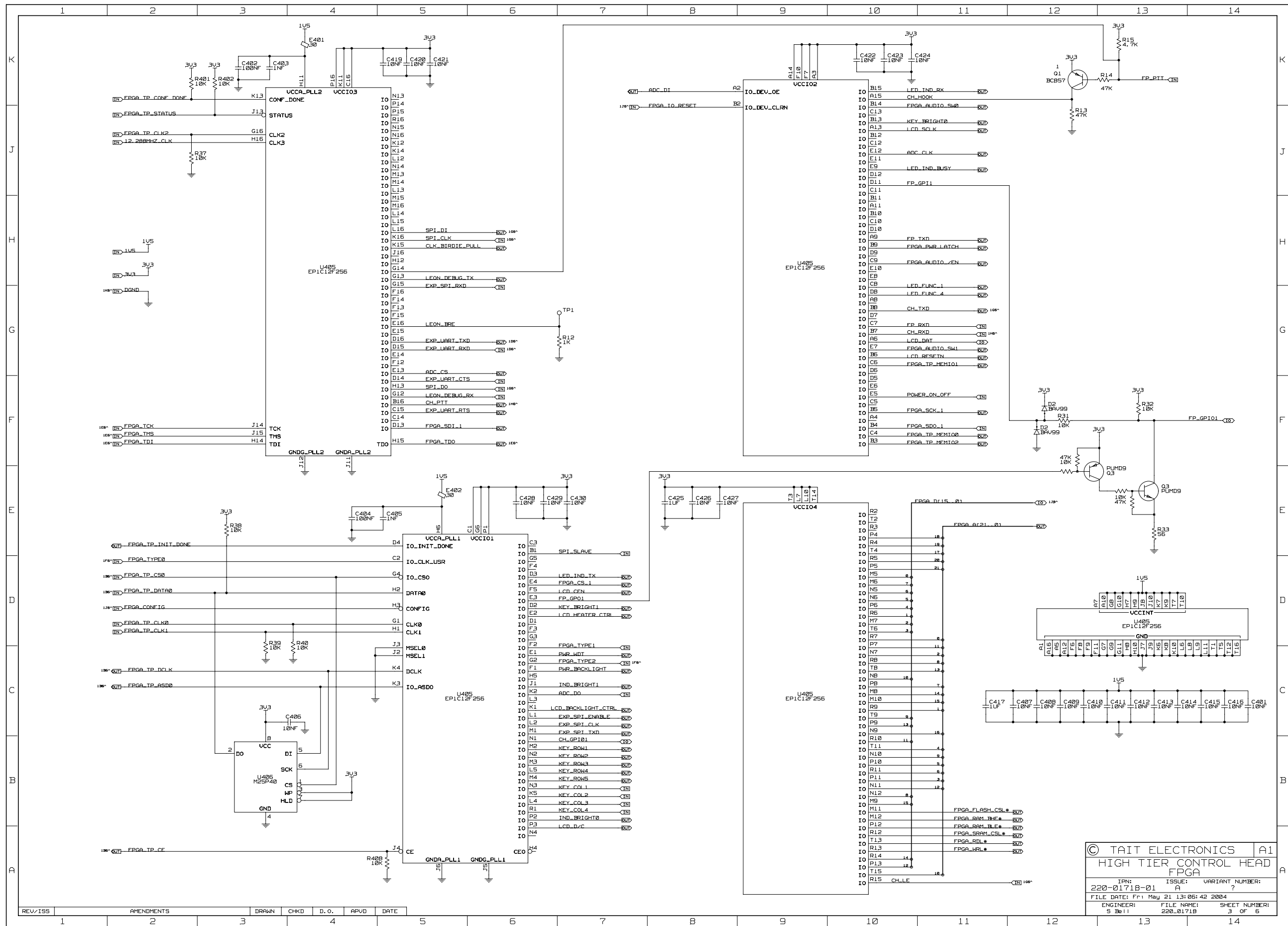


© TAIT ELECTRONICS A1  
 HIGH TIER CONTROL HEAD MAIN  
 IPN: 220-01718-01 ISSUE: A VARIANT NUMBER: ?  
 FILE DATE: Fri May 21 13:05:37 2004  
 ENGINEER: S Bell FILE NAME: 220\_01718 SHEET NUMBER: 1 OF 6



© TAIT ELECTRONICS		A2
HIGH TIER CONTROL HEAD POWER SUPPLIES & CLOCK		
IPN: 220-01718-01	ISSUE: A	VARIANT NUMBER: ?
FILE DATE: Fri May 21 13:06:39 2004		
ENGINEER: S Bell	FILE NAME: 220_01718	SHEET NUMBER: 2 OF 6

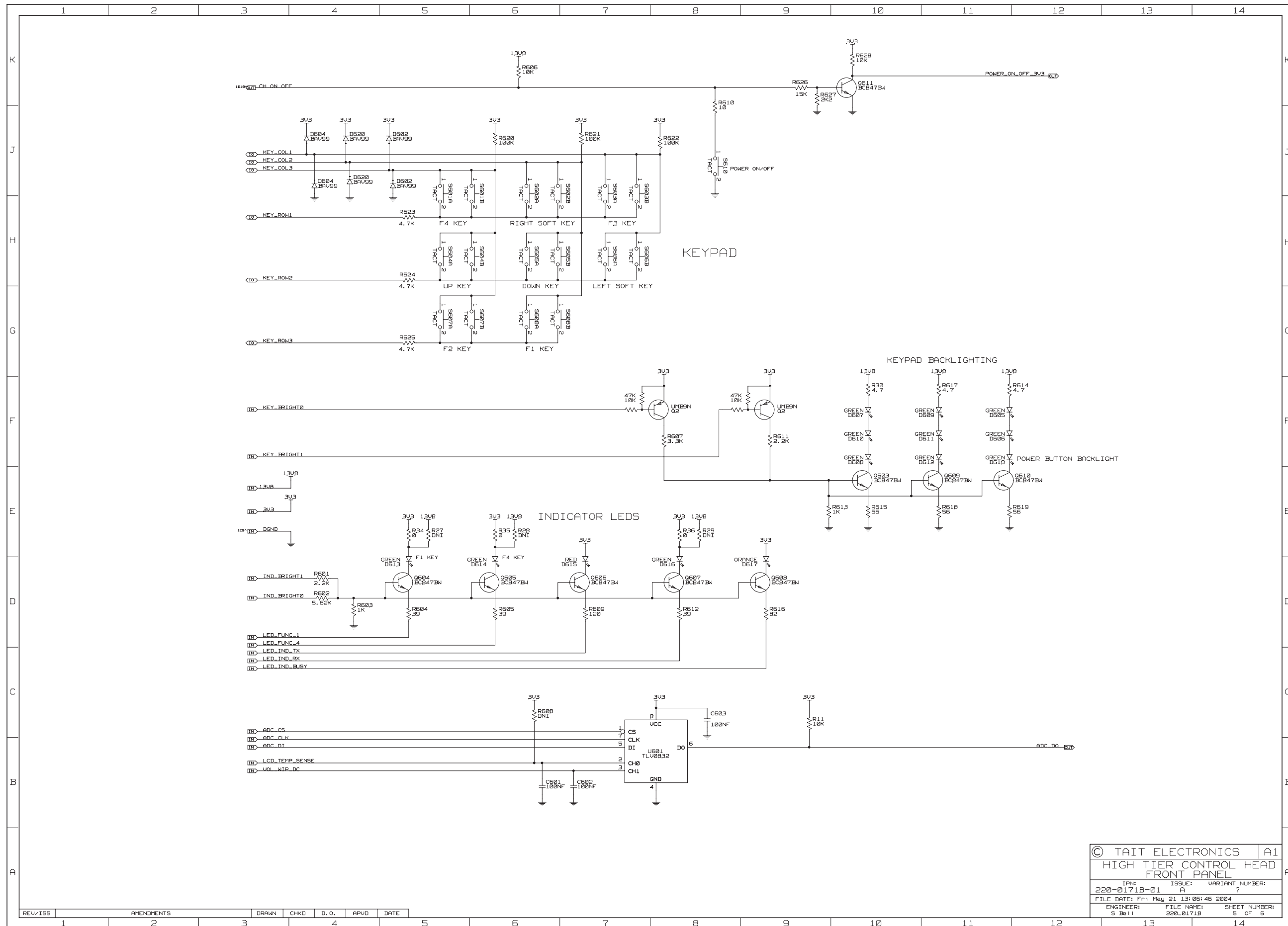
REV/ISS	AMENDMENTS	DRAWN	CHKD	D. O.	APVD	DATE
1						



© TAIT ELECTRONICS		A1
HIGH TIER CONTROL HEAD FPGA		
IPN:	ISSUE:	VARIANT NUMBER:
220-01718-01	A	?
FILE DATE: Fri May 21 13:06:42 2004	ENGINEER:	FILE NAME:
5 Be11	220_01718	SHEET NUMBER:
		3 OF 6

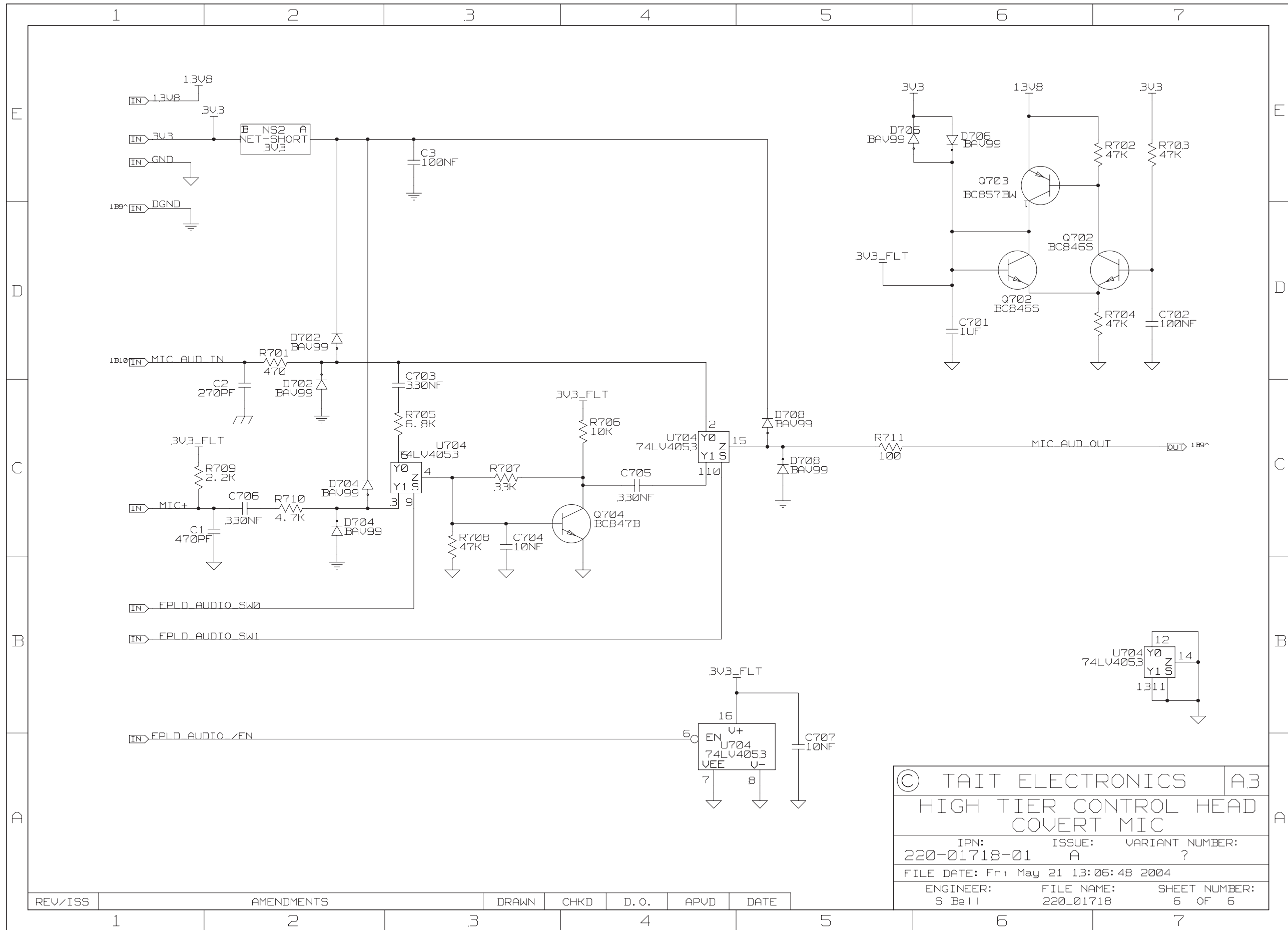






© TAIT ELECTRONICS		A1
HIGH TIER CONTROL HEAD FRONT PANEL		
IPN: 220-01718-01	ISSUE: A	VARIANT NUMBER: ?
FILE DATE: Fri May 21 13:06:46 2004		
ENGINEER: S B 11	FILE NAME: 220_01718	SHEET NUMBER: 5 OF 5

REV/ISS	AMENDMENTS	DRAWN	CHKD	D.O.	APVD	DATE
1						



© TAIT ELECTRONICS		A.3
HIGH TIER CONTROL HEAD COVERT MIC		
IPN: 220-01718-01	ISSUE: A	VARIANT NUMBER: ?
FILE DATE: Fri May 21 13:06:48 2004		
ENGINEER: S Bell	FILE NAME: 220_01718	SHEET NUMBER: 6 OF 6

REV/ISS	AMENDMENTS	DRAWN	CHKD	D.O.	APVD	DATE
1						
2						
3						
4						
5						
6						
7						